

CERTIFICATE OF LOCATION OF GOVERNMENT CORNER

EAST QUARTER Corner of Section 30, Township 105 N, Range 41 W, 5th P.M.

STATE OF MINNESOTA, County of MURRAY

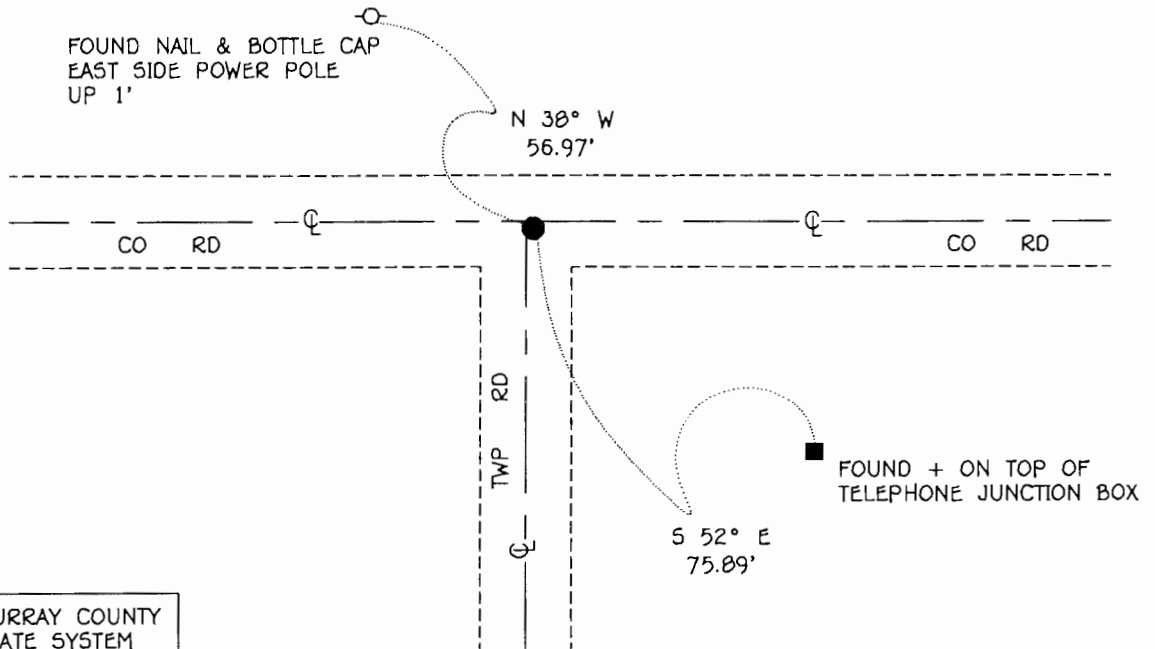
At the corner location shown on the sketch:

- On 5-20-96 found a 1/2" DIAMETER IRON ROD, DOWN 1'
DATE
- left monument as found, lowered monument, removed monument (explain)
- On 5-20-96 Placed a 3/4" x 12" REBAR WITH ALUMINUM CAP STAMPED
DATE "DNR SURVEY MARKER", DOWN 0.5', OVER IRON ROD

SKETCH OF REFERENCE TIES



NOTE:
 MONUMENT IS
 3' S OF CL E-W ROAD
 3' E OF CL ROAD SOUTH



1983 MURRAY COUNTY
 COORDINATE SYSTEM
 N = 100112.332
 E = 490229.469

BEARINGS OBSERVED WITH COMPASS

Statement of evidence relative to this corner location is on back of page.

JUL '96 JBM
WMAD0594.00.00.01

I hereby certify that this document and the data contained herein was prepared by me or under my direct supervision

Bruce W. Shipped 7/12/96
SIGNATURE DATE

License Number 17003

- Land Surveyor, Professional Engineer
- County Surveyor, County Engineer

OFFICE OF THE COUNTY RECORDER

County of _____

I hereby certify that this document was filed in the Co. recorders office at _____ .M. on the _____ day of _____ A.D., 19____

County Recorder James V. Johnson
By _____ JUL 16 1996, Deputy

DOCUMENT NO. _____

East Quarter Corner of Section 30, Township 105 North, Range 41 West

The DNR Bureau of Engineering contacted the following for survey information:

Minnesota Secretary of State's Office
Murray County Recorder's Office
Murray County Highway Engineer's Office
Madsen Land Surveying of Fairmont

1861 U.S. General Land Office notes obtained from the Secretary of State's Office show the corner marked with a wood post in a mound with trench and pits as per instructions.

1895 Surveyor's Record Book A, page 58, obtained from the County Recorder's Office, contains a survey by B. W. Woolstencroft. Survey shows a government mound at corner.

The above information is also contained in a Surveyor's Record Book obtained from the County Highway Engineer's Office.

1934 Surveyor's Record Book A, page 58, obtained from the County Recorder's Office, contains the following note by F. A. March about corner:

"stone" - R.P. tack in telephone pole, southeast, 45.4 feet
- R.P. tack in corner fence post, southwest, 44.8 feet

The above information is also contained in a Surveyor's Record Book obtained from the County Highway Engineer's Office.

1988 May 5, the County Highway Department found a field stone down 1 foot at corner. A steel pin was set above the center of the stone and the following ties were taken:

nail and cap in power pole, northwest, 57.03 feet
nail and cap in power pole, north-northeast, 71.64 feet
"X" in top of telephone cable terminal, southeast, 76.07 feet

1988 June 6, John Madsen Land Surveying found a 1 inch rod down 4 inches, which was set by the County Highway Department, at corner. The following ties were taken to corner:

bottle cap in power pole, northwest, 42.80 feet
bottle cap in 6" tree, north, 80.00 feet
tie (no description), southeast, 51.80 feet
in line with fence north
on the center line of roads east, west and south

1996 May 20, DNR Bureau of Engineering found a 1/2 inch diameter iron rod down 1 foot at corner. Did not excavate for the record stone. Searched for and found record ties as shown on sketch of reference ties. The fence north of corner, per 1988 ties, no longer exists.

Analysis of the above information led the DNR Bureau of Engineering to conclude that the found iron rod marks the location of the corner.